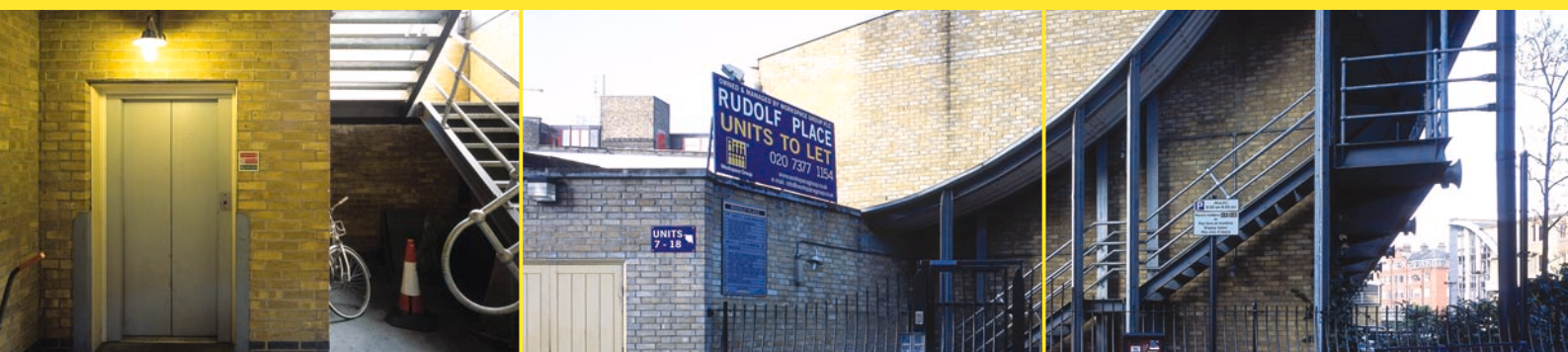




→ Rudolf Place

Miles Street → London SW8 1RP

Rudolf Place provides units suitable for light industrial use ranging in size from 616 sq ft (57 sq m) to 1,228 sq ft (114 sq m).



Facilities and services at Rudolf Place →

Flexible lease terms → Professional management team → 24 hour access → On-site parking by arrangement → Passenger lift → Secure site →

Flexible → Affordable → Workspace throughout London

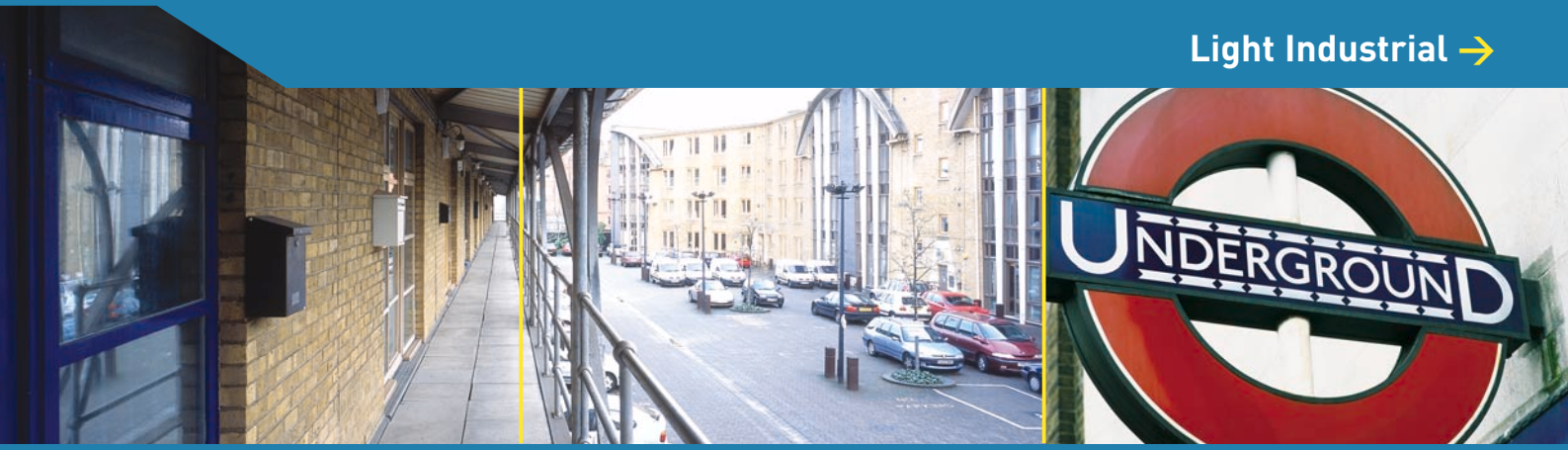
tel→
020 7377 1154

email→
info@workspacegroup.co.uk

web→
www.workspacegroup.co.uk



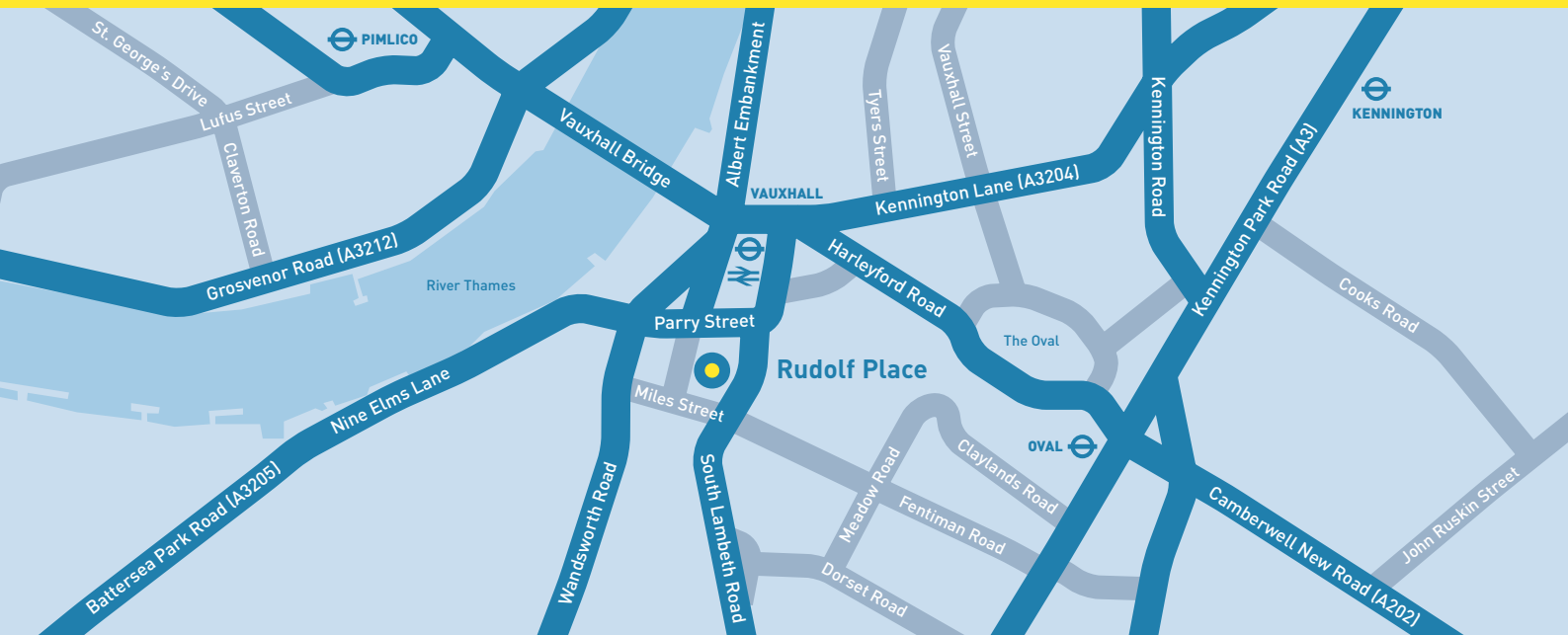
Workspace Group



Benefits of being a Workspace Group tenant:

Expand or contract quickly and easily within a large number of London and South East based properties

- Join other successful businesses
- Supportive and experienced Centre Managers
- Leases or Licenses on a long or short term basis
- Choose from our 'Workspace Plus' range of business support services, including discounted insurance
-



Location:

Rudolf Place is located on Miles Street, off the A203 South Lambeth Road, a short distance from Vauxhall underground station (Victoria line) and Vauxhall Cross railway station (mainline).

The next step:

- Telephone for details of available units
- arrange to view any units of interest
- decide which one best suits your particular needs
- complete easy-to-understand documents
- make an initial rent and deposit payment
- and then you can move in within 24 hours
-

Misrepresentation Act:

These particulars and measurements therein do not form part of any contract and whilst every effort has been made to ensure accuracy, this cannot be guaranteed.

For more information contact Workspace Group →

tel→
020 7377 1154

email→
info@workspacegroup.co.uk

web→
www.workspacegroup.co.uk



Workspace Group