

The Barley Mow's variety of office and studio units are set back from Chiswick High Road (A315), just off Duke's Avenue. A short drive to the west from Chiswick High Road allows quick access to the M4 motorway, meaning Heathrow airport and the South East motorway network are within easy reach. Turnham Green and Chiswick Park are the nearest underground stations (both District line) whilst numerous bus routes also service the area.



Next steps

- Contact Workspace Group for availability
- Arrange to view any units of interest
- Decide which best suits your needs
- Complete easy-to-understand documents
- Make initial rent and deposit payment
- Move in within 24 hours

telephone 020 7247 7614 **email** info@workspacegroup.co.uk **website** workspacegroup.co.uk

Benefits of being a Workspace Group customer

- Short leases or licenses, often only three months long, offer great flexibility
- Expand or contract quickly and easily within over 100 London based properties
- Join a community of other successful businesses
- Dedicated and supportive centre managers
- Support services including insurance, telecoms and internet connection

TRADELINK Welcome to our customer community workspacegroup.co.uk/tradelink



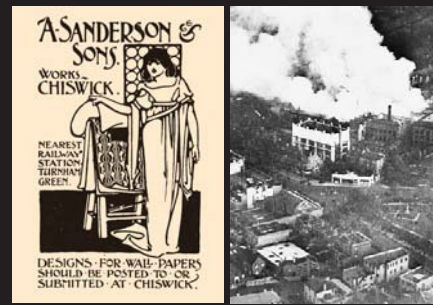
BARLEY MOW CENTRE

10 Barley Mow Passage, Chiswick, London W4 4PH

Flexible → Affordable → Workspace to let throughout London



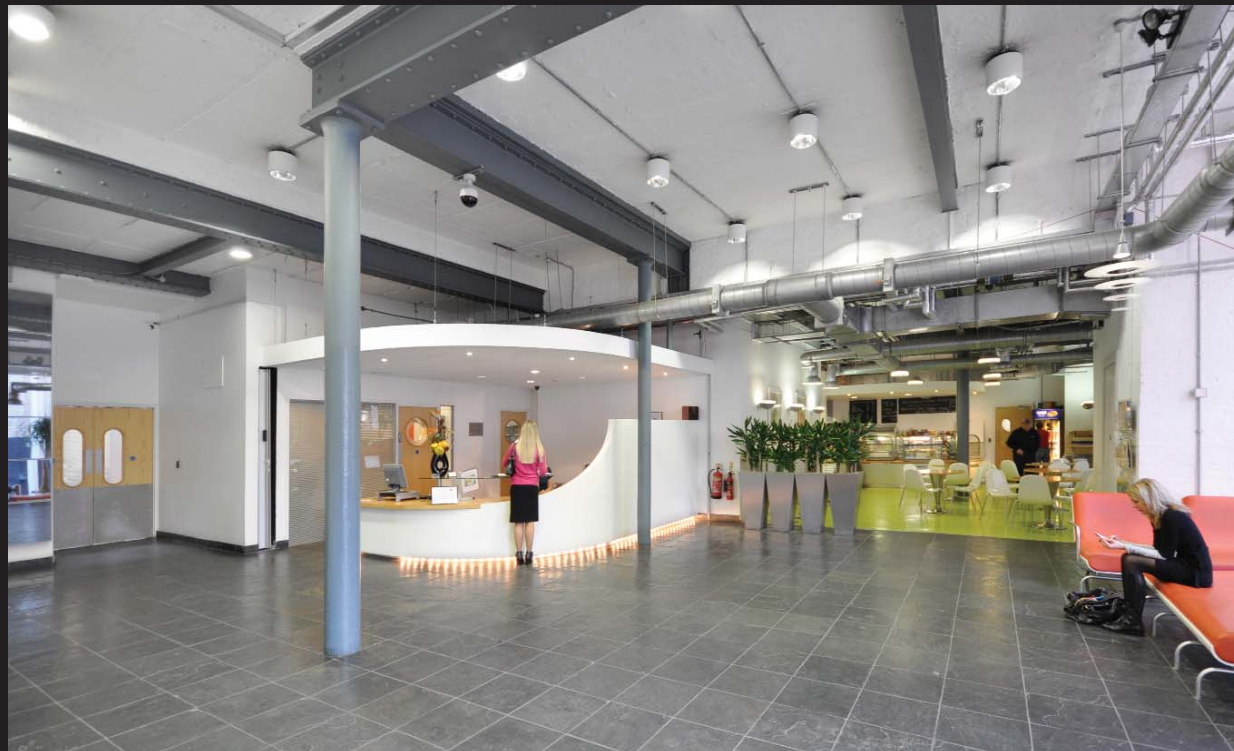
Workspace Group



The Barley Mow Centre was previously home to the Sanderson Wallpaper factory. Built in 1893, the site later suffered a huge fire that destroyed most of the building. In the mid 1970's the centre became home to the first commercially developed 'workspace' in the UK, providing units of flexible space with shared facilities. Following several changes of ownership, Workspace Group took over the building in December 1993, and today the centre houses over four hundred people in a variety of small businesses.

Offices and studios to let in leafy Chiswick

Located in the heart of west London's leafy Chiswick, the Barley Mow Centre in recent years has become an area-defining hub for creativity and innovation. On the centre's doorstep is a huge choice of shops, cafés and restaurants along Chiswick High Road and King Street, running into Hammersmith.



BARLEY MOW CENTRE

10 Barley Mow Passage, Chiswick, London W4 4PH

Floorplans

Unit size range

20 - 4,300 sq ft (02 - 399 sq m)

Amenities

- 24 hour access
- Broadband
- Café/restaurant
- CCTV
- Comfort cooling system
- Conference & meeting rooms
- Designated Centre Manager
- Passenger lift
- Recycling facilities
- Staffed Reception



Misrepresentation Act:
These particulars and measurements therein do not form part of any contract and whilst every effort has been made to ensure accuracy, this cannot be guaranteed.