

What makes us tick?

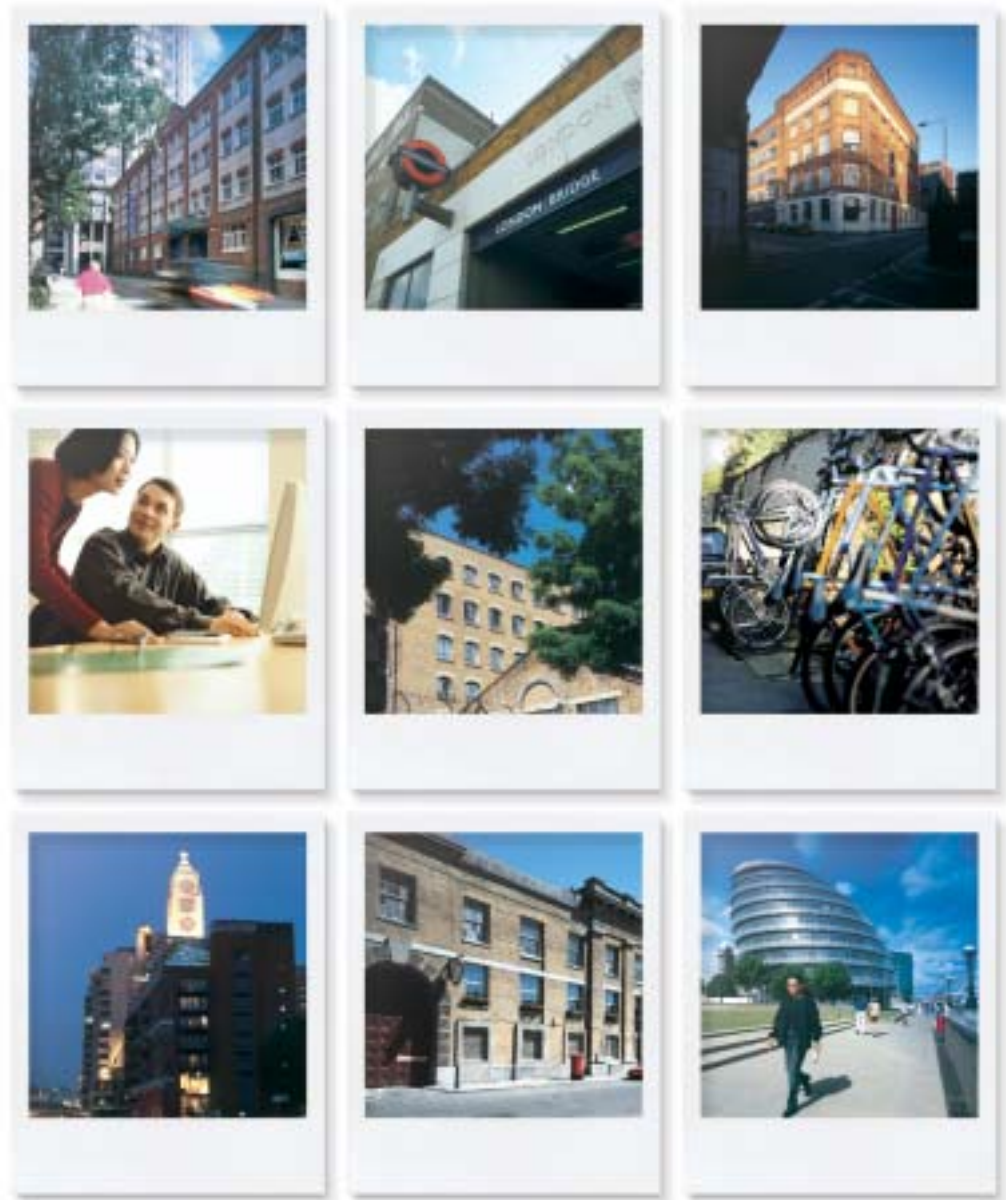


Workspace Group

Paul Erzczak Watch Restorer ↑
Clerkenwell Workshops

Whatever, whenever, however

From business centres and studios to small-unit light industrial workshops and storage, Workspace Group's accommodation is tailored to the needs of small and medium-sized businesses. And better still, our 'easy-in, easy out' flexible lease terms mean they can stay just as long as it suits them to do so.



Property Locations

Acton, Barking, Basildon, Beckton, Bermondsey, Bounds Green, Bow Brent, Camberley, Chiswick, City, Clapham, Clerkenwell, Dalston, Earlsfield, Feltham, Hackney, Hanwell, Harrow, Horsham, Islington, Kingston, Ladbrooke Grove, Lambeth, Luton, Maidenhead, Milton Keynes, Newbury, Newham, North Kensington, Raynes Park, Reading, Redhill, Shoreditch, Southall, Southwark, Stevenage, Stratford, Tottenham, Tower Hamlets, Vauxhall, Waltham Abbey, Walthamstow, Wandsworth, Wapping, West Dulwich, Whitechapel, Woking, Wood Green.

Variety

What is Workspace Group? Quite simply, it's what our customers want. Small to medium-sized enterprises span every form of business activity and their accommodation requirements are equally diverse. They all need well-managed space, of course, but we offer it on terms tailored to their circumstances in buildings that reflect the character of their businesses – whether that's funky or traditional.



Fancy a coffee?

You'll find break-out space in many Workspace Group centres – generally a café or restaurant where our customers can meet like-minded businesses, have informal meetings, or simply take time out. Good on-site management ensures a high-quality environment – just as our customers would expect. Why else would over 90% of them recommend our accommodation to others?



Location, location, location

With 5.5 million square feet of space in 4164 units at 92 properties clustered around the centre of London and the South East, Workspace Group offers a variety of accommodation in a choice of locations. Of this space, 80% is located within the M25, and almost 50% within five miles of the London Eye. With one third of the UK's small businesses located in London and the South East, the Group focuses on providing accommodation where its customers are most active.



What I really, really, need is...

Highly trained, on-site management staff work hard to provide time-saving services for our customers – we recognise that for our small-business clients, time is an extremely valuable resource. Our package of essential accommodation-related services includes **electricity, gas, business insurance, telephony and internet connectivity, security and recycling facilities**. These services complement our core accommodation offer and their immediate availability adds to the attraction of our space.



Breathing new life

Urban regeneration is at the heart of everything we do. Many of our properties have been recycled from their original use, creating accommodation for new and small businesses. Our properties include the former factory premises of many famous business names – Marmite, Airfix, Sanderson Fabrics, Peek Freans, Zenith Carburettors and Metal Box, to name just a few. Some of our major regeneration projects – The Leathermarket in Bermondsey, and 3 Mills Studios in Stratford – are catalysts for the regeneration of the surrounding area, encouraging the development of thriving mixed-use communities.



Dedication, commitment, enchantment

Running a portfolio as large and diverse as ours isn't straightforward. We believe it is only by directly controlling all aspects of management that we can meet the service standards our customers expect. Our staff try to fulfil our customers' needs – from sourcing accommodation and managing the building and its services, to organising net-working events. This requires a motivated team, dedicated to doing their best and enchanted with the concept of helping small businesses to grow.



Thank you

To all our customers whose work is featured in this publication - and to our dedicated staff who made it all possible.



Workspace Group plc

Magenta House
85 Whitechapel Road
London E1 1DU
T 020 7247 7614
F 020 7247 0517
www.workspacegroup.co.uk

Simon Parchment ↑
Faircharm Studios, SE10